

The LIFETEST Procedure

Stratum 1: Gender = 1						
Product-Limit Survival Estimates						
Day_abs		Survival	Failure	Survival Standard Error	Number Failed	Number Left
0.000		1.0000	0	0	0	110
0.000		.	.	.	1	109
0.000		0.9818	0.0182	0.0127	2	108
1.000		.	.	.	3	107
1.000		.	.	.	4	106
1.000		.	.	.	5	105
1.000		.	.	.	6	104
1.000		.	.	.	7	103
1.000		.	.	.	8	102
1.000		.	.	.	9	101
1.000		0.9091	0.0909	0.0274	10	100
2.000		.	.	.	11	99
2.000		.	.	.	12	98
2.000		.	.	.	13	97
2.000		.	.	.	14	96
2.000		.	.	.	15	95
2.000		.	.	.	16	94
2.000		.	.	.	17	93
2.000		.	.	.	18	92
2.000		0.8273	0.1727	0.0360	19	91
3.000		.	.	.	20	90
3.000		.	.	.	21	89
3.000		.	.	.	22	88
3.000		.	.	.	23	87
3.000		.	.	.	24	86
3.000		.	.	.	25	85
3.000		.	.	.	26	84
3.000		.	.	.	27	83
3.000		.	.	.	28	82
3.000		0.7364	0.2636	0.0420	29	81
4.000		.	.	.	30	80
4.000		.	.	.	31	79
4.000		0.7091	0.2909	0.0433	32	78
5.000		.	.	.	33	77

The LIFETEST Procedure

Stratum 1: Gender = 1						
Product-Limit Survival Estimates						
Day_abs		Survival	Failure	Survival Standard Error	Number Failed	Number Left
5.000		0.6909	0.3091	0.0441	34	76
6.000		.	.	.	35	75
6.000		.	.	.	36	74
6.000		.	.	.	37	73
6.000		0.6545	0.3455	0.0453	38	72
7.000		.	.	.	39	71
7.000		.	.	.	40	70
7.000		.	.	.	41	69
7.000		.	.	.	42	68
7.000		.	.	.	43	67
7.000		.	.	.	44	66
7.000		0.5909	0.4091	0.0469	45	65
8.000		0.5818	0.4182	0.0470	46	64
9.000		0.5727	0.4273	0.0472	47	63
11.000		.	.	.	48	62
11.000		.	.	.	49	61
11.000		0.5455	0.4545	0.0475	50	60
12.000		0.5364	0.4636	0.0475	51	59
13.000		.	.	.	52	58
13.000		.	.	.	53	57
13.000		0.5091	0.4909	0.0477	54	56
14.000		.	.	.	55	55
14.000		.	.	.	56	54
14.000		.	.	.	57	53
14.000		.	.	.	58	52
14.000		0.4636	0.5364	0.0475	59	51
15.000		.	.	.	60	50
15.000		0.4455	0.5545	0.0474	61	49
16.000		.	.	.	62	48
16.000		0.4273	0.5727	0.0472	63	47
20.000		.	.	.	64	46
20.000		0.4091	0.5909	0.0469	65	45
21.000		.	.	.	66	44
21.000		0.3909	0.6091	0.0465	67	43

The LIFETEST Procedure

Stratum 1: Gender = 1						
Product-Limit Survival Estimates						
Day_abs		Survival	Failure	Survival Standard Error	Number Failed	Number Left
25.000		0.3818	0.6182	0.0463	68	42
29.000		0.3727	0.6273	0.0461	69	41
30.000		.	.	.	70	40
30.000		0.3545	0.6455	0.0456	71	39
32.000		0.3455	0.6545	0.0453	72	38
35.000		0.3364	0.6636	0.0450	73	37
36.000		0.3273	0.6727	0.0447	74	36
42.000		0.3182	0.6818	0.0444	75	35
45.000		.	.	.	76	34
45.000		.	.	.	77	33
45.000		0.2909	0.7091	0.0433	78	32
47.000		.	.	.	79	31
47.000		0.2727	0.7273	0.0425	80	30
60.000		0.2636	0.7364	0.0420	81	29
62.000		0.2545	0.7455	0.0415	82	28
67.000		0.2455	0.7545	0.0410	83	27
72.000		0.2364	0.7636	0.0405	84	26
74.000		0.2273	0.7727	0.0400	85	25
90.000		0.2182	0.7818	0.0394	86	24
96.000		0.2091	0.7909	0.0388	87	23
121.000		0.2000	0.8000	0.0381	88	22
124.000		0.1909	0.8091	0.0375	89	21
130.000		0.1818	0.8182	0.0368	90	20
150.000		0.1727	0.8273	0.0360	91	19
196.000		0.1636	0.8364	0.0353	92	18
302.000		0.1545	0.8455	0.0345	93	17
365.000	*	.	.	.	93	16
365.000	*	.	.	.	93	15
365.000	*	.	.	.	93	14
365.000	*	.	.	.	93	13
365.000	*	.	.	.	93	12
365.000	*	.	.	.	93	11
365.000	*	.	.	.	93	10
365.000	*	.	.	.	93	9

The LIFETEST Procedure

Stratum 1: Gender = 1						
Product-Limit Survival Estimates						
Day_abs		Survival	Failure	Survival Standard Error	Number Failed	Number Left
365.000	*	.	.	.	93	8
365.000	*	.	.	.	93	7
365.000	*	.	.	.	93	6
365.000	*	.	.	.	93	5
365.000	*	.	.	.	93	4
365.000	*	.	.	.	93	3
365.000	*	.	.	.	93	2
365.000	*	.	.	.	93	1
365.000	*	.	.	.	93	0

Note: The marked survival times are censored observations.

Summary Statistics for Time Variable Day_abs

Quartile Estimates			
Percent	Point Estimate	95% Confidence Interval	
		[Lower	Upper)
75	67.000	35.000	150.000
50	14.000	7.000	21.000
25	3.000	3.000	6.000

Mean	Standard Error
69.382	10.359

Note: The mean survival time and its standard error were underestimated because the largest observation was censored and the estimation was restricted to the largest event time.

The LIFETEST Procedure

Stratum 2: Gender = 2						
Product-Limit Survival Estimates						
Day_abs		Survival	Failure	Survival Standard Error	Number Failed	Number Left
0.000		1.0000	0	0	0	124
0.000		.	.	.	1	123
0.000		.	.	.	2	122
0.000		.	.	.	3	121
0.000		.	.	.	4	120
0.000		.	.	.	5	119
0.000		.	.	.	6	118
0.000		.	.	.	7	117
0.000		.	.	.	8	116
0.000		.	.	.	9	115
0.000		.	.	.	10	114
0.000		0.9113	0.0887	0.0255	11	113
1.000		.	.	.	12	112
1.000		.	.	.	13	111
1.000		.	.	.	14	110
1.000		.	.	.	15	109
1.000		.	.	.	16	108
1.000		.	.	.	17	107
1.000		0.8548	0.1452	0.0316	18	106
2.000		.	.	.	19	105
2.000		.	.	.	20	104
2.000		.	.	.	21	103
2.000		.	.	.	22	102
2.000		.	.	.	23	101
2.000		.	.	.	24	100
2.000		.	.	.	25	99
2.000		.	.	.	26	98
2.000		.	.	.	27	97
2.000		.	.	.	28	96
2.000		0.7661	0.2339	0.0380	29	95
3.000		.	.	.	30	94
3.000		.	.	.	31	93
3.000		.	.	.	32	92
3.000		.	.	.	33	91

The LIFETEST Procedure

Stratum 2: Gender = 2						
Product-Limit Survival Estimates						
Day_abs		Survival	Failure	Survival Standard Error	Number Failed	Number Left
3.000		.	.	.	34	90
3.000		.	.	.	35	89
3.000		.	.	.	36	88
3.000		.	.	.	37	87
3.000		0.6935	0.3065	0.0414	38	86
4.000		.	.	.	39	85
4.000		.	.	.	40	84
4.000		.	.	.	41	83
4.000		.	.	.	42	82
4.000		.	.	.	43	81
4.000		.	.	.	44	80
4.000		0.6371	0.3629	0.0432	45	79
5.000		.	.	.	46	78
5.000		.	.	.	47	77
5.000		.	.	.	48	76
5.000		0.6048	0.3952	0.0439	49	75
6.000		.	.	.	50	74
6.000		0.5887	0.4113	0.0442	51	73
7.000		.	.	.	52	72
7.000		.	.	.	53	71
7.000		0.5645	0.4355	0.0445	54	70
8.000		0.5565	0.4435	0.0446	55	69
9.000		0.5484	0.4516	0.0447	56	68
10.000		.	.	.	57	67
10.000		0.5323	0.4677	0.0448	58	66
12.000		.	.	.	59	65
12.000		0.5161	0.4839	0.0449	60	64
13.000		0.5081	0.4919	0.0449	61	63
14.000		.	.	.	62	62
14.000		.	.	.	63	61
14.000		.	.	.	64	60
14.000		.	.	.	65	59
14.000		.	.	.	66	58
14.000		0.4597	0.5403	0.0448	67	57

The LIFETEST Procedure

Stratum 2: Gender = 2						
Product-Limit Survival Estimates						
Day_abs		Survival	Failure	Survival Standard Error	Number Failed	Number Left
15.000		.	.	.	68	56
15.000		.	.	.	69	55
15.000		0.4355	0.5645	0.0445	70	54
16.000		.	.	.	71	53
16.000		0.4194	0.5806	0.0443	72	52
17.000		0.4113	0.5887	0.0442	73	51
20.000		0.4032	0.5968	0.0441	74	50
21.000		.	.	.	75	49
21.000		.	.	.	76	48
21.000		.	.	.	77	47
21.000		0.3710	0.6290	0.0434	78	46
25.000		0.3629	0.6371	0.0432	79	45
26.000		0.3548	0.6452	0.0430	80	44
30.000		0.3468	0.6532	0.0427	81	43
33.000		.	.	.	82	42
33.000		0.3306	0.6694	0.0422	83	41
35.000		0.3226	0.6774	0.0420	84	40
41.000		0.3145	0.6855	0.0417	85	39
47.000		0.3065	0.6935	0.0414	86	38
54.000		0.2984	0.7016	0.0411	87	37
55.000		0.2903	0.7097	0.0408	88	36
60.000		0.2823	0.7177	0.0404	89	35
63.000		0.2742	0.7258	0.0401	90	34
64.000		0.2661	0.7339	0.0397	91	33
71.000		0.2581	0.7419	0.0393	92	32
82.000		0.2500	0.7500	0.0389	93	31
90.000		0.2419	0.7581	0.0385	94	30
97.000		0.2339	0.7661	0.0380	95	29
106.000		0.2258	0.7742	0.0375	96	28
129.000		0.2177	0.7823	0.0371	97	27
153.000		0.2097	0.7903	0.0366	98	26
157.000		0.2016	0.7984	0.0360	99	25
160.000		0.1935	0.8065	0.0355	100	24
185.000		0.1855	0.8145	0.0349	101	23

The LIFETEST Procedure

Stratum 2: Gender = 2						
Product-Limit Survival Estimates						
Day_abs		Survival	Failure	Survival Standard Error	Number Failed	Number Left
235.000		0.1774	0.8226	0.0343	102	22
237.000		0.1694	0.8306	0.0337	103	21
244.000		0.1613	0.8387	0.0330	104	20
252.000		0.1532	0.8468	0.0323	105	19
266.000		0.1452	0.8548	0.0316	106	18
311.000		0.1371	0.8629	0.0309	107	17
335.000		0.1290	0.8710	0.0301	108	16
365.000	*	.	.	.	108	15
365.000	*	.	.	.	108	14
365.000	*	.	.	.	108	13
365.000	*	.	.	.	108	12
365.000	*	.	.	.	108	11
365.000	*	.	.	.	108	10
365.000	*	.	.	.	108	9
365.000	*	.	.	.	108	8
365.000	*	.	.	.	108	7
365.000	*	.	.	.	108	6
365.000	*	.	.	.	108	5
365.000	*	.	.	.	108	4
365.000	*	.	.	.	108	3
365.000	*	.	.	.	108	2
365.000	*	.	.	.	108	1
365.000	*	.	.	.	108	0

Note: The marked survival times are censored observations.

Summary Statistics for Time Variable Day_abs

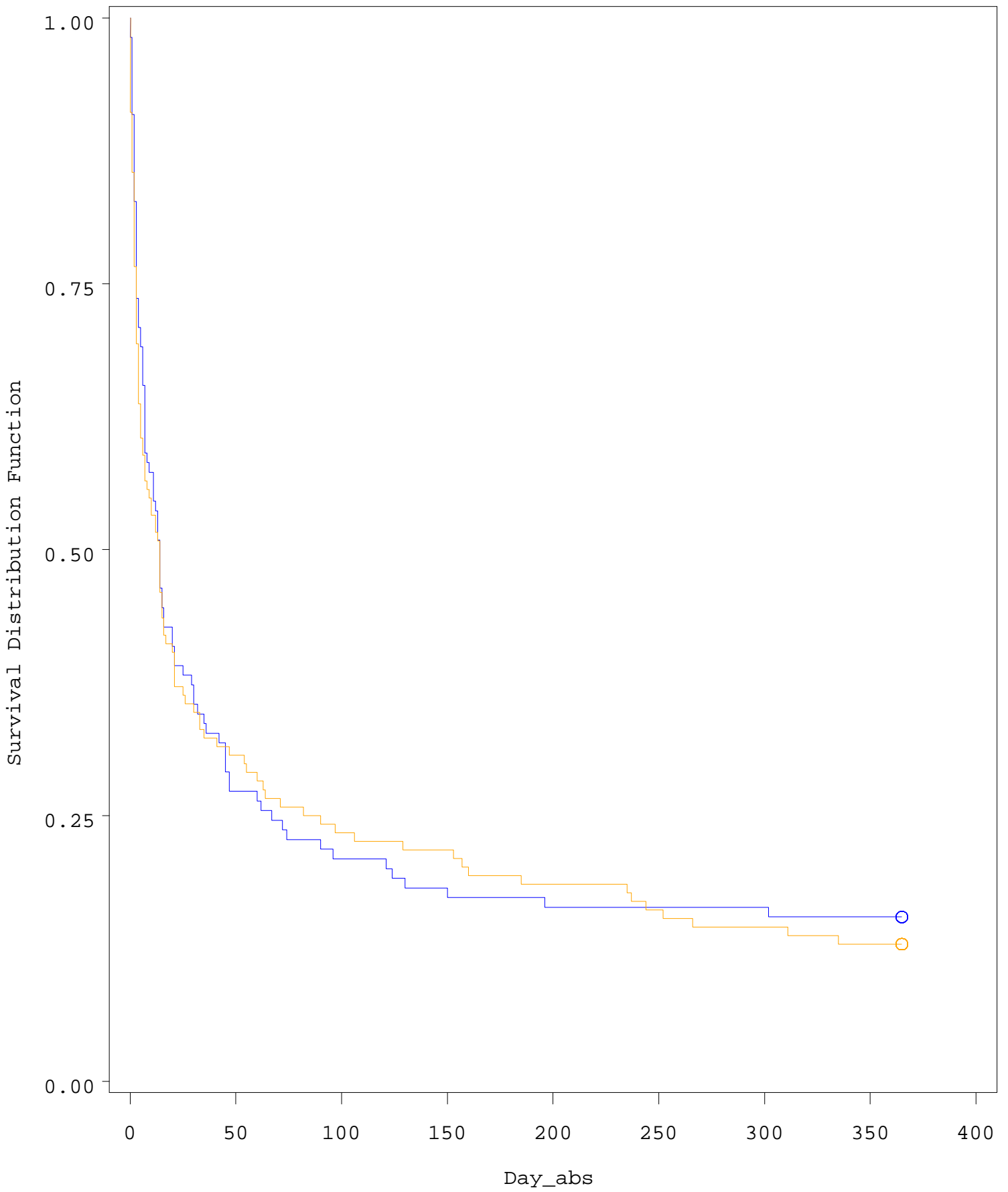
Quartile Estimates			
Percent	Point Estimate	95% Confidence Interval	
		[Lower	Upper)
75	86.000	33.000	235.000
50	14.000	7.000	17.000
25	3.000	2.000	4.000

The LIFETEST Procedure

Mean	Standard Error
76.847	10.797

Note: The mean survival time and its standard error were underestimated because the largest observation was censored and the estimation was restricted to the largest event time.

Summary of the Number of Censored and Uncensored Values					
Stratum	Gender	Total	Failed	Censored	Percent Censored
1	1	110	93	17	15.45
2	2	124	108	16	12.90
Total		234	201	33	14.10



STRATA:

— Gender=1
 — Gender=2

○ Censored Gender=1
 ○ Censored Gender=2

*The LIFETEST Procedure**Testing Homogeneity of Survival Curves for Day_abs over Strata*

Rank Statistics		
Gender	Log-Rank	Wilcoxon
1	-2.8784	-692.00
2	2.8784	692.00

Covariance Matrix for the Log-Rank Statistics		
Gender	1	2
1	47.8064	-47.8064
2	-47.8064	47.8064

Covariance Matrix for the Wilcoxon Statistics		
Gender	1	2
1	1067510	-1067510
2	-1067510	1067510

Test of Equality over Strata			
Test	Chi-Square	DF	Pr > Chi-Square
Log-Rank	0.1733	1	0.6772
Wilcoxon	0.4486	1	0.5030
-2Log(LR)	0.0047	1	0.9452